

VIEW
FRONT ELEVATION
REAR ELEVATION
COMPOSITION ROOF
STONE
TWO STORIES AND BATH
BRICK BASEMENT
ASBESTOS SHINGLES
TILE #
SLATE
NUMBER OF STORIES 4
NON-COMBUSTIBLE & NON-TOXIC
GOVERNING OF METAL
(C.B.)
CONCRETE
TILE
STONE
BRICK
WOOD
IRON
STEEL
COPPER
LEAD
ZINC
NICKEL
CHROME
ALUMINUM
GLASS
PAPER
PAINT
VARIOUS

Brick building with frame cornice.
" " " stone front.
" " " frame side.
Brick veneered building.

Brick building with brick or metal cornice.
Tile building.
Concrete or reinforced concrete construction.
Hollow concrete or cement block construction.
Stone building.

Fire proof construction.

patd

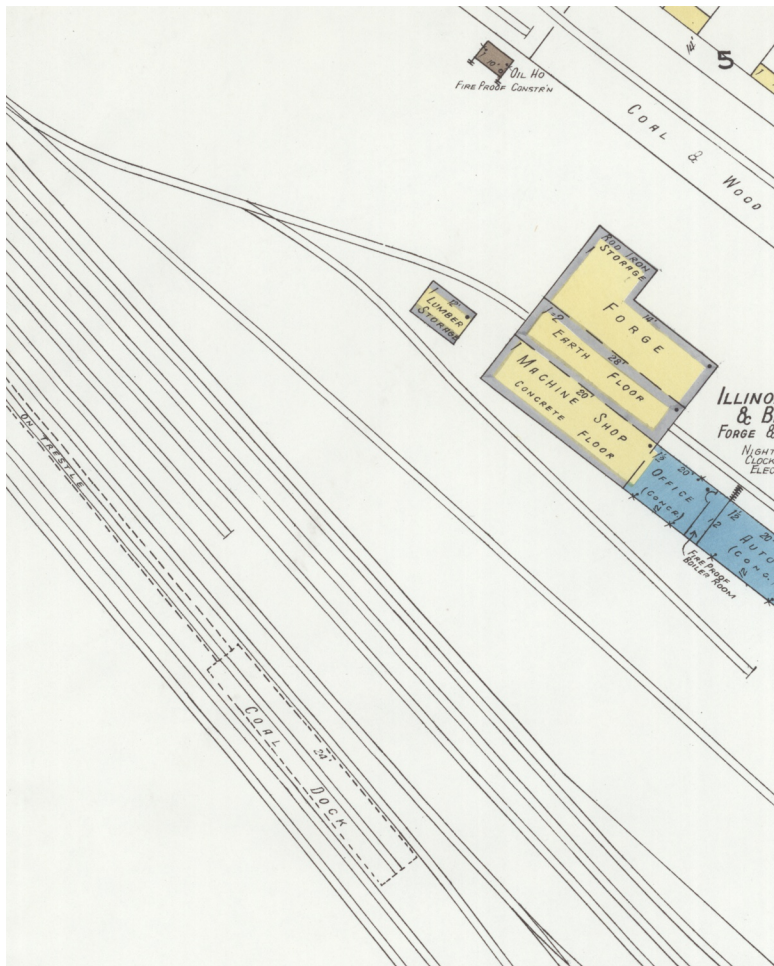
1923

PUBLISHED BY THE

IS NOT GUARANTEED.
OUR SERVICE, BUT ABSOLUTE ACCURACY
PROVISION OF OUR PUBLICATIONS AND
GREAT CARE HAS BEEN EXERCISED IN THE

july





BRANDON
86'

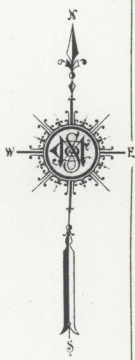
BRANDON
86'

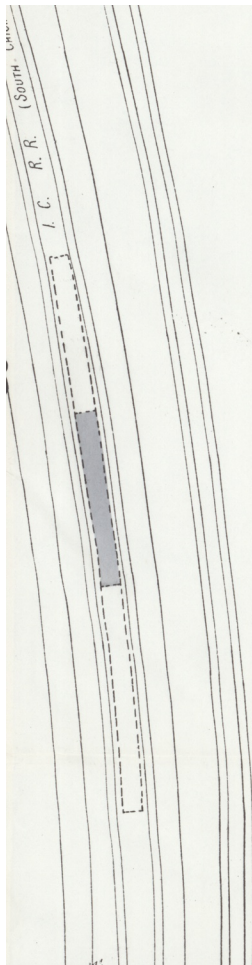
IS IMPROVEMENT
ALLAST CO.
MACHINE SHOP

& SUNDAY WATCHMAN
SERVICE, LIGHT & POWER.
HEAT: STEAM.-

1ST HUNGARIAN REFORMED CHURCH

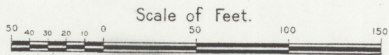
STOVE HEAT
ELEC LIGHT



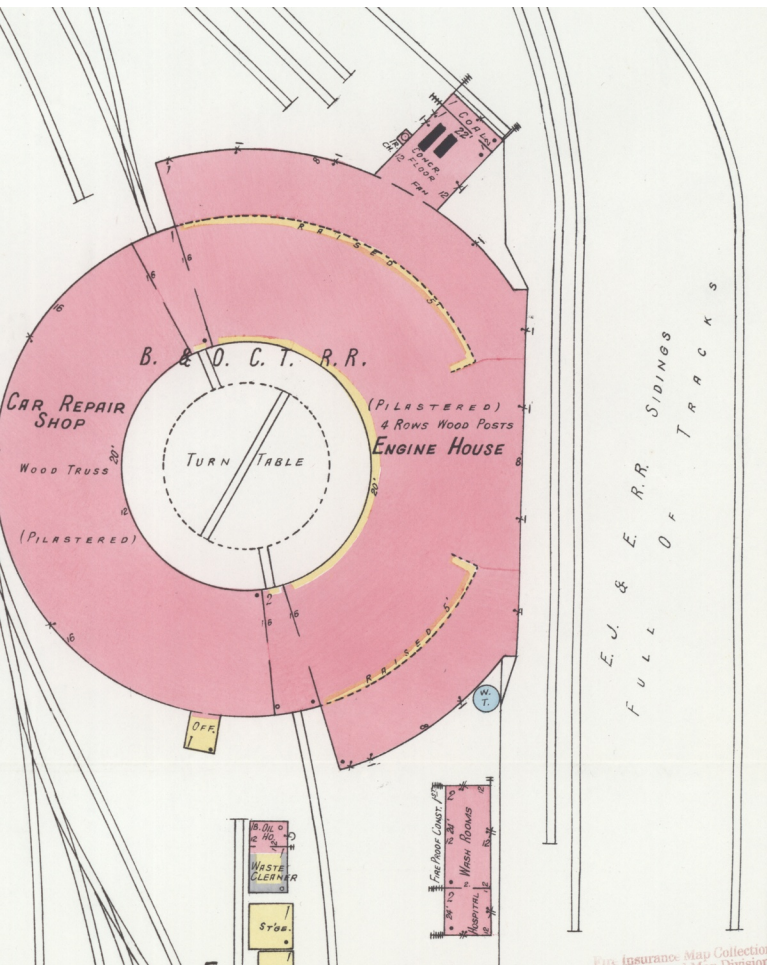


B. & O. C. T. R. R.
FREIGHT YARD

FULL OF TRACKS



Copyright 1923 by the Sanborn Map Co.



PENNA. SYSTEM R. R.

CAGO

73328
73329

AV.

7377

7354

6" W. PIPE
8.5'

D.H.

7377

7378

D.

D.H.

6" W. PIPE

8012

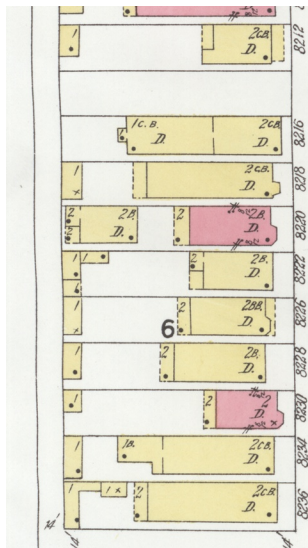
8012

REPAIR SHOP
ELECT. WORK

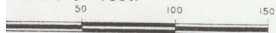
This is a detailed street map of the Village of Yorkville in Toronto, Ontario. The map shows a grid of streets and numbered lots. The streets are labeled with names and numbers, and the lots are numbered from 1 to 84. The map is color-coded with various shades of pink, blue, green, and yellow. Major streets include Yorkville Avenue, Bloor Street, and various numbered streets from 71st to 84th. The map also shows the location of the Yorkville station and the surrounding area.

A decorative compass rose with a central circular emblem containing a monogram, surrounded by eight points and a long vertical tail pointing South.

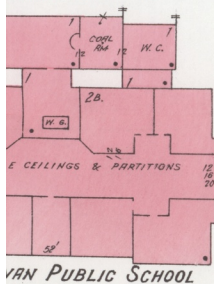
ILLINOIS STEEL COMPANY



Scale of Feet.

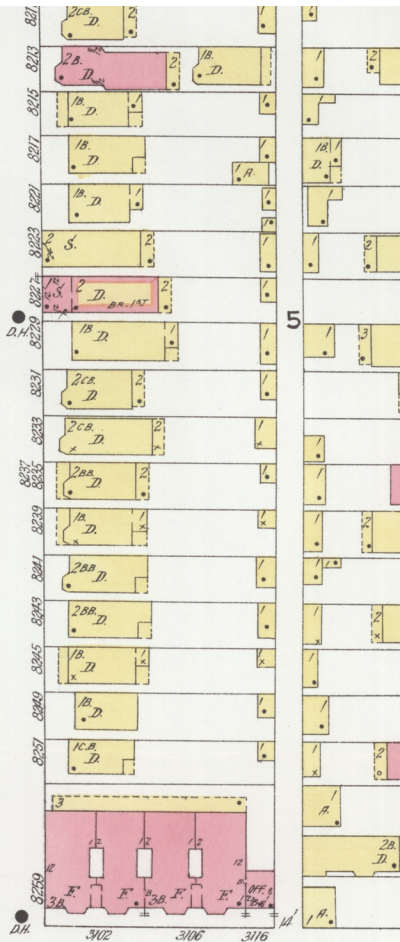


Copyright 1923 by the Sanborn Map Co.

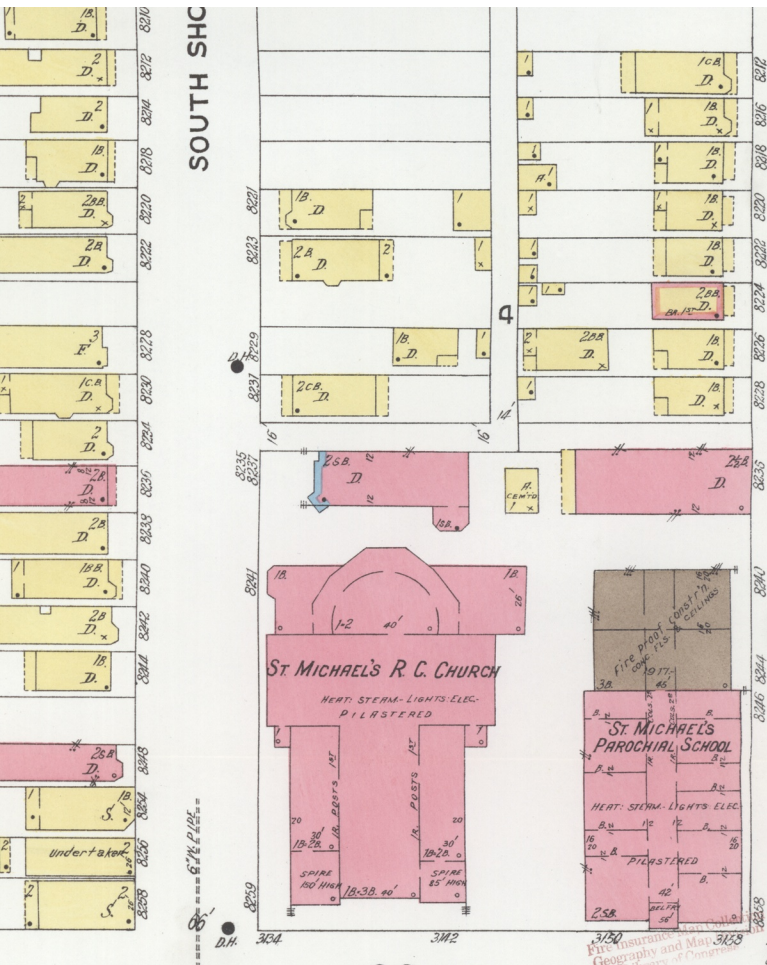


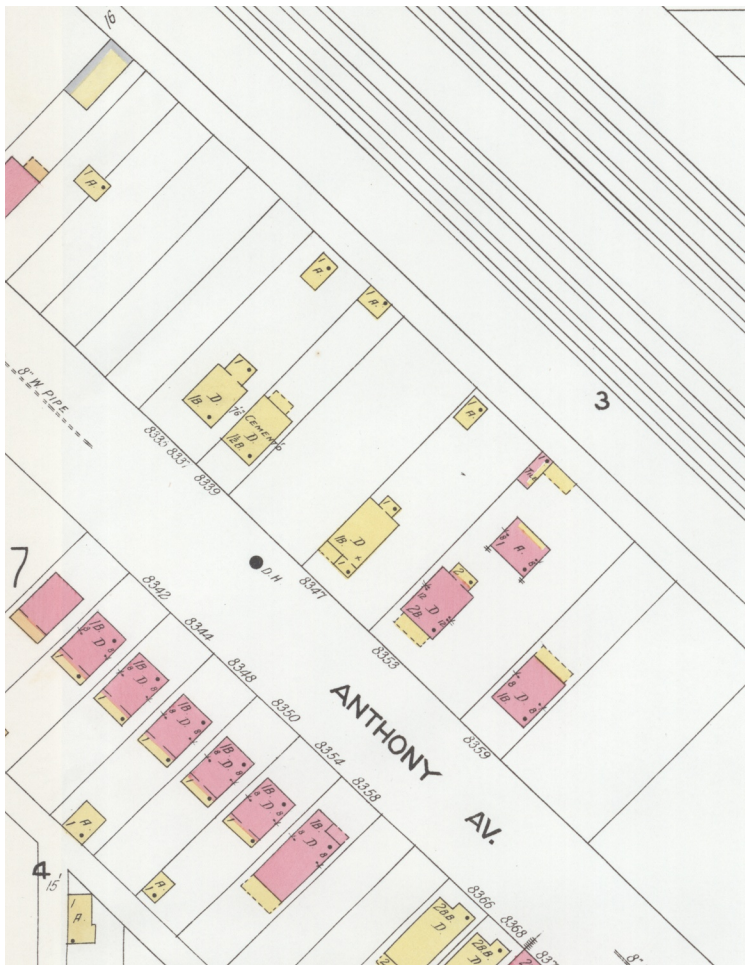
VAN PUBLIC SCHOOL

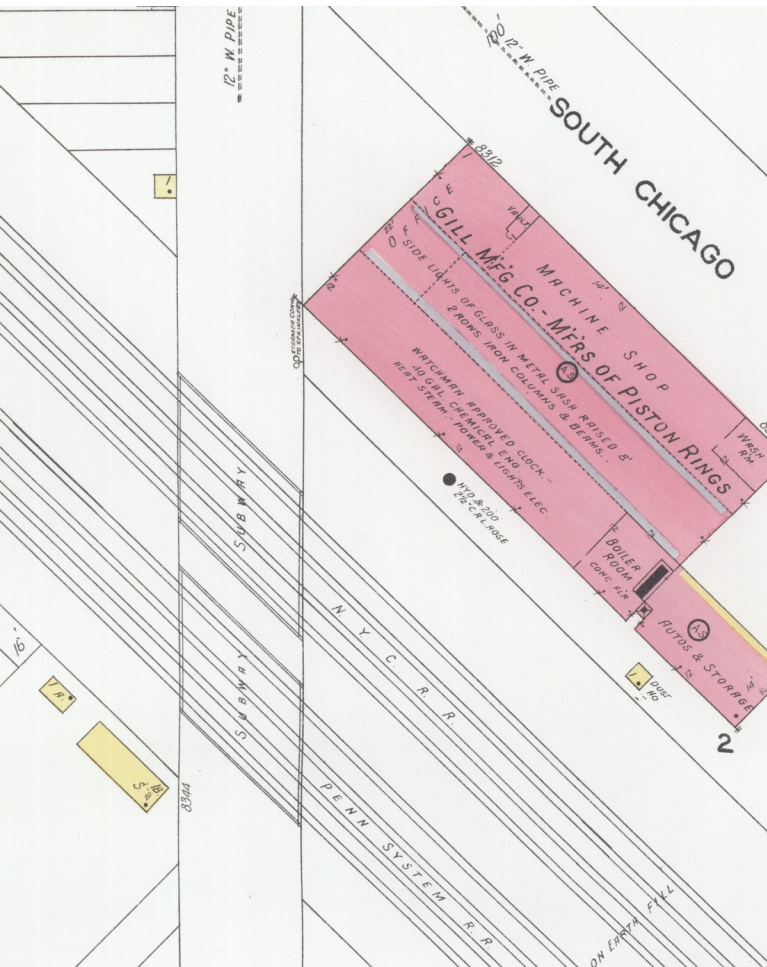
3052



SOUTH SHC

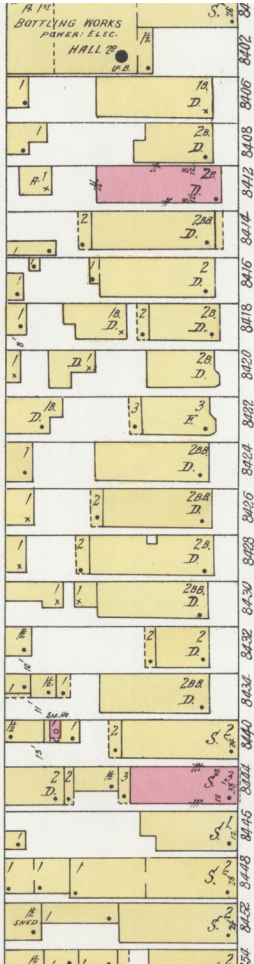
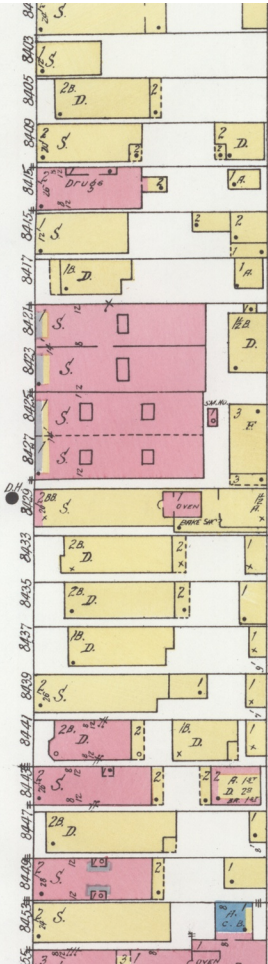






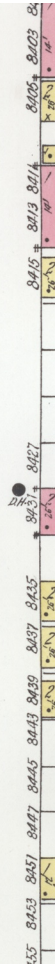
24" W. PIPE
6" W. PIPE

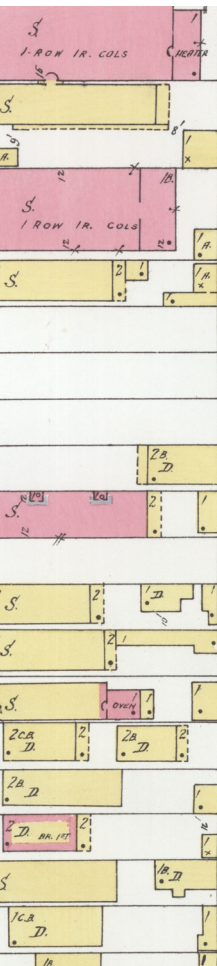
DD



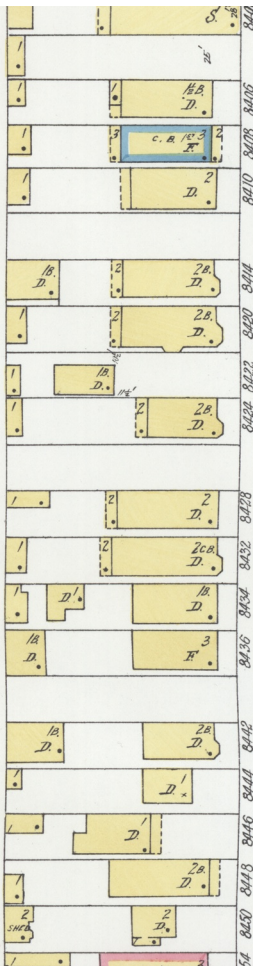
24" W. PIPE
6" W. PIPE

DD





2



6" W PIPE

D.H.

(46)



105

This issue consists entirely of details from the 1923 Sanborn Map Company publication on Chicago, Illinois. Sanborn maps, created for some 12,000 cities and towns in North America, were prepared for use by fire insurance providers and underwriters. This Chicago map, and thousands of others, are available in an online collection of the Library of Congress.

This zine was created in 2019 by Parker Higgins with the support of Kickstarter backers, and originally distributed on paper to 100 subscribers. To the extent possible, copyright and related rights in this work are waived under the terms of the Creative Commons Zero dedication.



